



From
£4,334 GBP

Single Room

£5,069 GBP

Twin Room

£4,334 GBP

Prices valid until
30th December 2025

10 days

Duration

England

Destination

**Level 1 - Introductory to
Moderate**

Activity

World of Shakespeare | Small Group Tour

May 15 2025 to May 24 2025

World of Shakespeare Small Group Tour

Odyssey offers easy, convenient, and relaxed escorted small group tours across the British isles, including England and beyond. We explore Englands natural beauty, its heritage around Shakespeare, its World Heritage Sites, and the world famous places associated with the bard, all with some truly spectacular scenery along the way. This and more is all waiting to be explored on one of Odyssey's small group tours of



England, designed for the senior traveller, and led by experienced, and enthusiastic like minded people.

If you are a lover of the world's greatest playwright, William Shakespeare, then this small group tour is for you. On this unique travel experience, we will attend six Shakespearean performances in both Stratford and London while learning more about the dramatist's most famous plays and how his life shaped his work. Another highlight of the tour will be exclusive illustrated lectures by world-renowned academics.

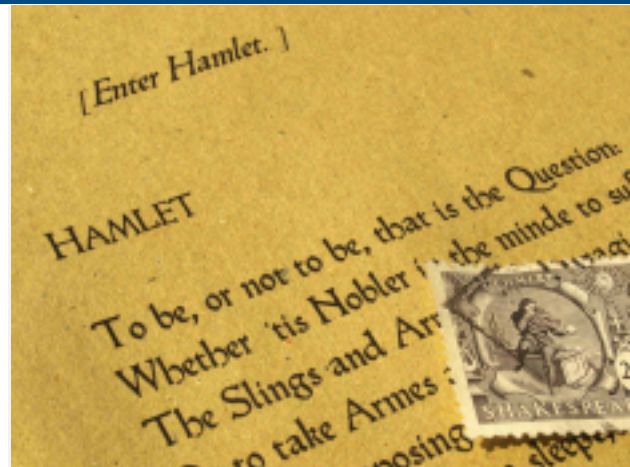
As part of the tour we will be attending plays put on by the Royal Shakespeare Company, a theatre based in Shakespeare's birthplace that is dedicated to bringing Shakespeare and his work to as many audiences as possible.

About the Shakespeare Tour

We begin our tour in Stratford upon Avon, a Tudor market town with more than 800 years of history. Home to quaint cottages, thatched roofs and lovely gardens, it is renowned worldwide for being the birthplace of William Shakespeare in 1564, as well as where he died in 1616. As well as watching plays and participating in post-performance discussions with your peers, we will visit Shakespeare's birthplace and see how his story began and the places he lived. After our three performances here, we make our way to London. In London, we have the opportunity to spend the day at the Globe theatre, where we will have a tour that is not available to the general public. We will have a lecture about the formidable theatre, originally built in 1599 by Shakespeare's playing company, the Lord Chamberlain's Men before seeing a performance there in the evening.

About Shakespeare

An English poet, playwright and actor, William Shakespeare was born in 1564 to John Shakespeare and Mary Arden. He lived with his family in Stratford-upon-Avon until he was eighteen, at which point he married Anne Hathaway, eight years his senior and already pregnant with their first child. Not all of Shakespeare's life is well-documented but by 1592 he had established a reputation in London. During this time he became



a founding member of The Lord Chamberlain's Men, a company of actors, later known as the King's Men. He produced most of his known work between 1589 and 1613, writing some of his most well-known plays like *Macbeth* and *King Lear* while in London. He died in 1616, at the age of 52 and is buried in the Holy Trinity church in his hometown.

[This link takes you to the Folger Shakespeare library for more information.](#)

For more details, click the 'Top 5' or 'Itinerary' buttons above! If you're keen to experience this tour, [please call](#) or [send an email](#). Or, to book, simply fill in the form on the right hand side of this page.

Highlights

1. Take advantage of tickets to 6 performances in Stratford and London.
2. Experience exclusive behind-the-scenes tours of Shakespeare's Globe in London and the Memorial Theatre in Stratford upon Avon.
3. Join post-performance discussions with experts in Stratford.
4. Enjoy illustrated lectures by renowned academics and theatre professionals.
5. Enjoy a Q&A session with a member of The Royal Shakespeare Company.

Itinerary

Day 1

Locations: London

Overview:

Upon arrival in London we will come to the hotel individually. There will be some free time before we join our Tour Leader for our tour

World of Shakespeare | Small Group Tour

<https://www.odysseytraveller.com>



orientation followed by our welcome dinner.

Accommodation:

1 night at London Lodge Kensington Hotel or similar.

Day 2-3-4

Locations: Stratford

Overview:

We will transfer by coach to Stratford-Upon-Avon. Along the way, we will enjoy lunch at a local restaurant en route before checking into our hotel. At the Shakespeare Birthplace Trust we will attend a Welcome & Introduction to our course. Highlights will be illustrated lectures by renowned academics and a Q&A Session with a member of The Royal Shakespeare Company.

During our time in Stratford we will visit Shakespeare's birthplace. We will see the Trust treasures which include a display of documents relating to Shakespeare's life and times, and other treasures from the archive of the Royal Shakespeare Company.

In Stratford we will attend 3 performances and post performance discussions, details still to be finalised.*

* We are awaiting final confirmation on course content and lectures in Stratford.

Accommodation:

3 nights at The Falcon Hotel or similar.

Day 5

Locations: Stratford to London

Overview:

This morning will be at leisure before our post-performance discussion (TBC). In the afternoon we will transfer to London.

Accommodation:

4 nights at London Lodge Kensington Hotel or similar.



Day 6

Locations: London

Overview:

We have a free day to explore on individually, and a performance in the evening.

Accommodation:

London Lodge Kensington Hotel or similar.

Day 7

Locations: London

Overview:

After breakfast we visit the Victoria & Albert Museum, the world's largest museum of decorative arts and design, housing a permanent collection of over 4.5 million objects. There will be a performance scheduled for this evening, details still to be confirmed.

Accommodation:

London Lodge Kensington Hotel or similar.

Day 8

Locations: London

Overview:

We will have time to enjoy breakfast at the hotel before our visit to the Globe Theatre. Our classes today commence with a tour of the theatre with a Globe Education Practitioner. This is an exclusive tour which is not available to the general public. We will visit Shakespeare's Globe Exhibition, enjoy a guided tour around the Rose archaeological remains, and attend a lecture and demonstration before attending an evening performance at the Globe Theatre.

Note – have a good breakfast, no break from 11:30-17:30!

Accommodation:

London Lodge Kensington Hotel or similar.



Day 9

Locations: London

Overview:

Our tour concludes today after breakfast.

Inclusions / Exclusions

What's included in our Tour

- Services of a Tour Leader for the duration of tour.
- Transport in comfortable and modern coaches.
- All lectures, excursions, entrance fees, and local guides.
- 8 nights of hotel accommodation.
- Breakfasts daily, 1 lunch, and 2 Dinners.

What's not included in our Tour

- Items of a personal nature such as telephone calls and laundry.
- International airfares and departure taxes.
- Comprehensive travel insurance.

Level 1 - Introductory to Moderate

Participants must be able to carry their own luggage, climb and descend stairs, moderate walking on uneven surfaces for 3 - 5 kilometres per day. Suitable for most fitness levels.

Please do not hesitate to contact us with any requests for further information about this tour or any others offered by Odyssey Travel.